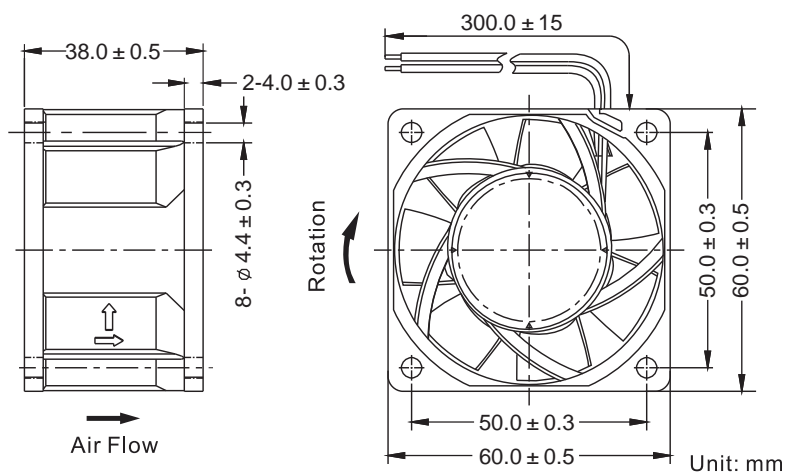




Dimensions Drawing



General Specification

Frame and Impeller : Thermal Plastic , UL 94V-0

Lead Wires : UL Type

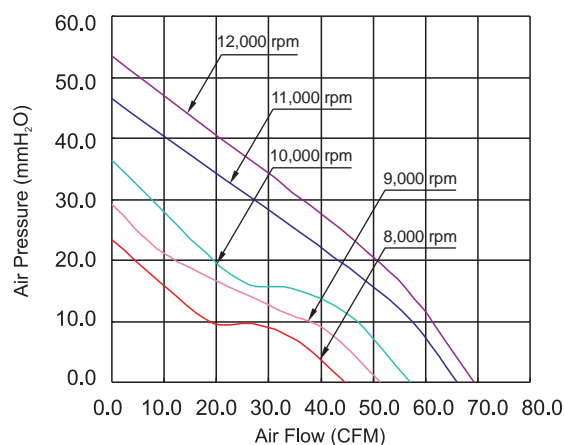
(+) : Red (-) : Black

Operation Temperature : -10°C~70°C
35%~85%RH

Storage Temperature : -40°C~80°C
35%~85%RH



Performance Curves



Listed Model	Bearing System	Rated Voltage	Operation Voltage	Rated Current	Rated Speed	Air Flow	Air Pressure	Noise Level	Available Features (Optional)				Weight
		VDC	VDC	A	RPM	CFM	mmH ₂ O	dBA	Tachometer Output	Rotation Detector	Thermal Control	Pulse Width Modulation	g
RGD6038B1	Ball	12	6.0~13.8	1.60	12,000	69.2	53.6	64	•	•		•	106
RGH6038B1			6.0~13.8	0.86	10,000	57.0	36.3	59	•	•		•	
RGM6038B1			6.0~13.8	0.65	9,000	51.3	29.2	56	•	•		•	
RGL6038B1			6.0~13.8	0.48	8,000	44.7	23.3	53	•	•		•	
RGD6038B2	Ball	24	12.0~27.6	0.72	11,000	66.1	46.4	62	•	•		•	
RGH6038B2			12.0~27.6	0.46	10,000	57.0	36.3	59	•	•		•	
RGM6038B2			12.0~27.6	0.36	9,000	51.3	29.2	56	•	•		•	
RGL6038B2			12.0~27.6	0.26	8,000	44.7	23.3	53	•	•		•	
RGD6038B4	Ball	48	24.0~55.2	0.41	11,000	66.1	46.4	62	•	•		•	
RGH6038B4			24.0~55.2	0.31	10,000	57.0	36.3	59	•	•		•	
RGM6038B4			24.0~55.2	0.26	9,000	51.3	29.2	56	•	•		•	
RGL6038B4			24.0~55.2	0.21	8,000	44.7	23.3	53	•	•		•	